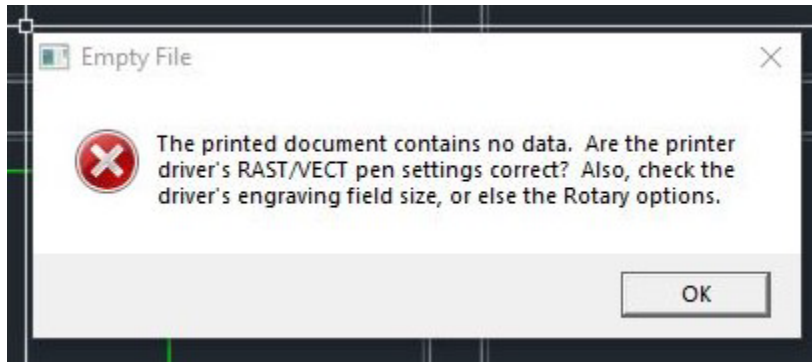


## UWM RP Lab

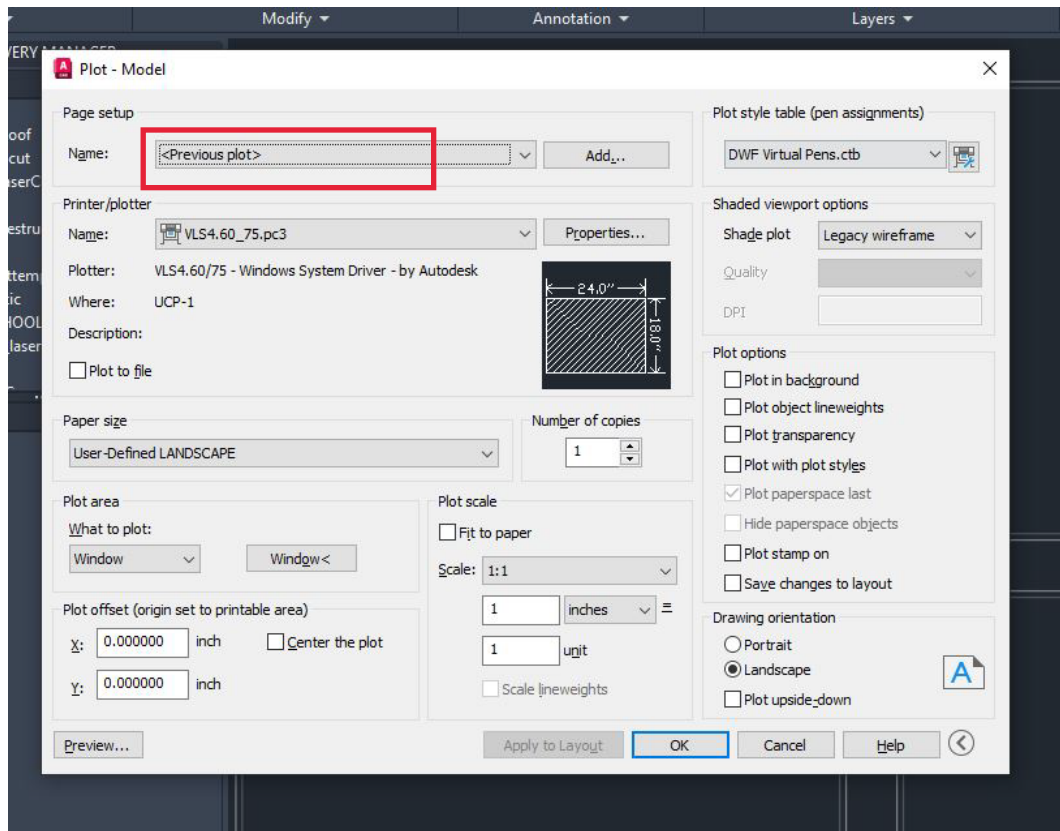
### Laser Cutter Troubleshooting >>> Resetting Printer Settings

While laser cutting, you may run into an error message sending your job from AutoCAD. If you receive the error message below, it's likely that the printer settings have been reset, and need to be re-established. This guide will illustrate how.



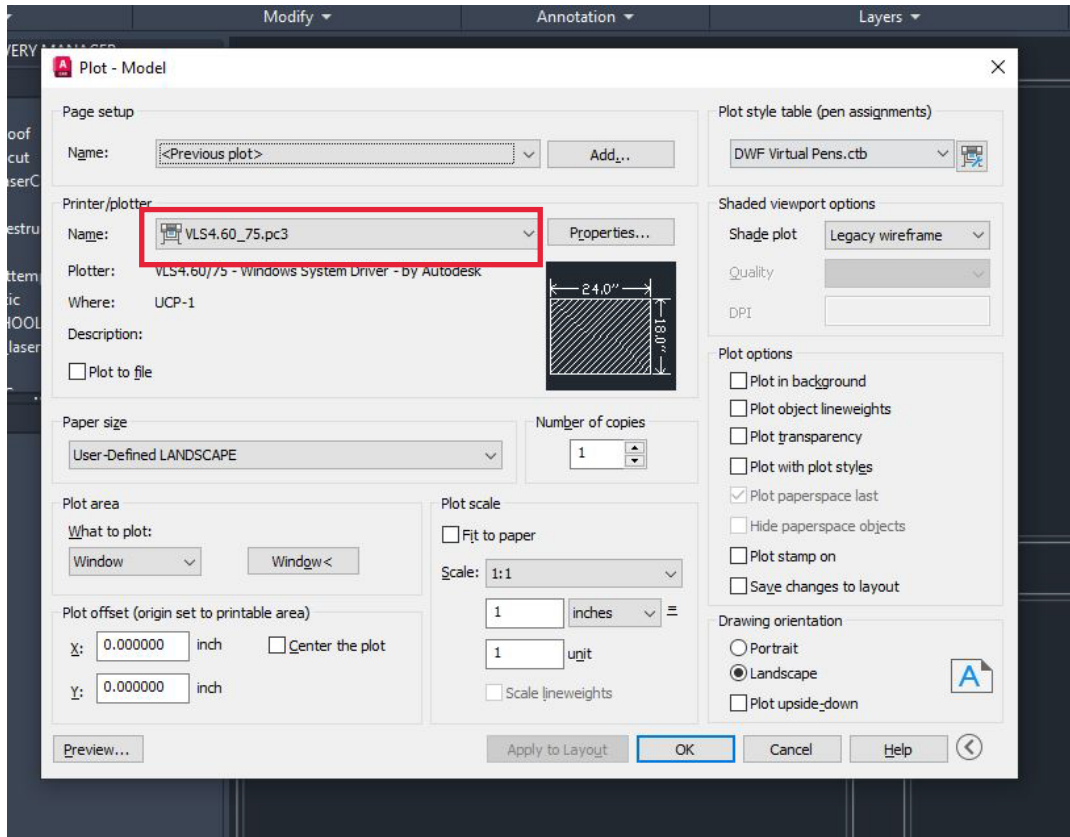
#### Step 1: Check "Page Setup"

- If "Previous Plot" is not an option under page setup, proceed to the next steps.
- If "Previous Plot" can be selected, check if it matches the settings in this guide and try sending the job again.



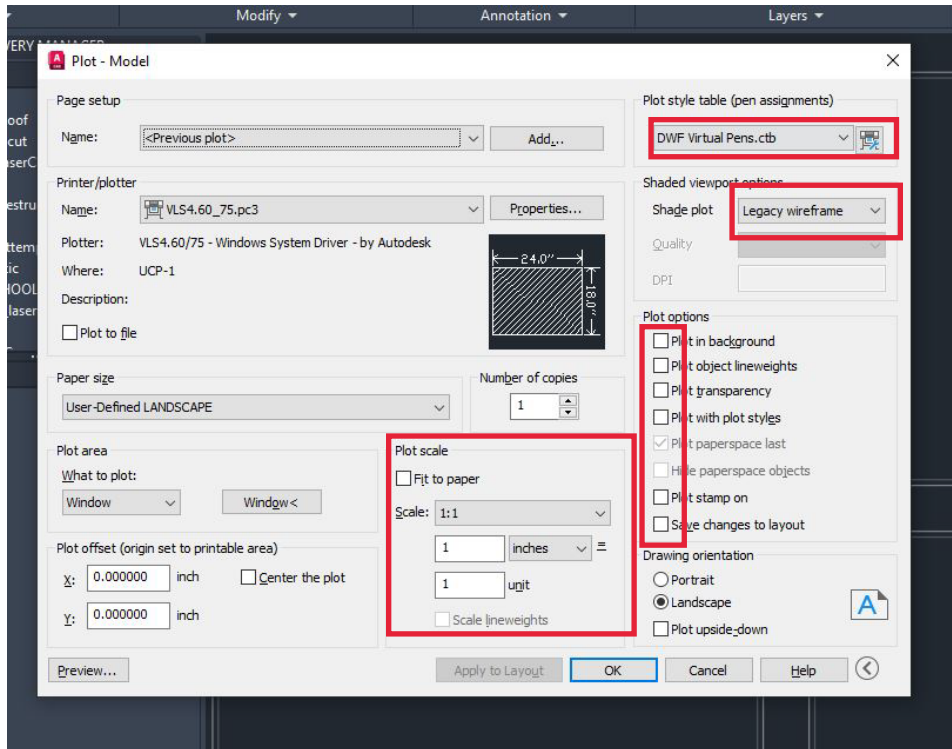
## Step 2: Check which “Printer/Plotter” is selected

- For the **Blue** laser cutter, select **VLS.60\_75** from the dropdown menu.
- For the **White** laser cutter, select **V-460** from the dropdown menu.
- For the **Red** laser cutter, select **ILS12.150D** from the dropdown menu.



### Step 3: Check “Plot Scale”

- De-select checkbox for “Fit to paper”.
- For Scale: Select “1:1” from the dropdown menu.



### Step 4: Check “Plot style table”, “Shaded viewport options” and “Plot options”

- For Plot style table, select “DWF Virtual Pens.ctb” from the dropdown menu.
- For Shaded viewport options, select “Legacy wireframe” from the dropdown menu.
- For Plot options, de-select any all boxes possible

### Step 5: Establish new “Previous plot” and test sending your job

- Select “OK”> a second box will appear, select “OK” again
- This should establish these settings as a new “Previous Plot”

## Step 6: Save these settings as a “.PMP” file

- Select the **“Properties”** button next to the Printer/Plotter dropdown menu
- Select **“PMP file name”** under the **“User-defined Paper Sizes & Calibration”** dropdown.
- Select **“Save PMP...”** button, select **“OK”** to save these settings for future use.

